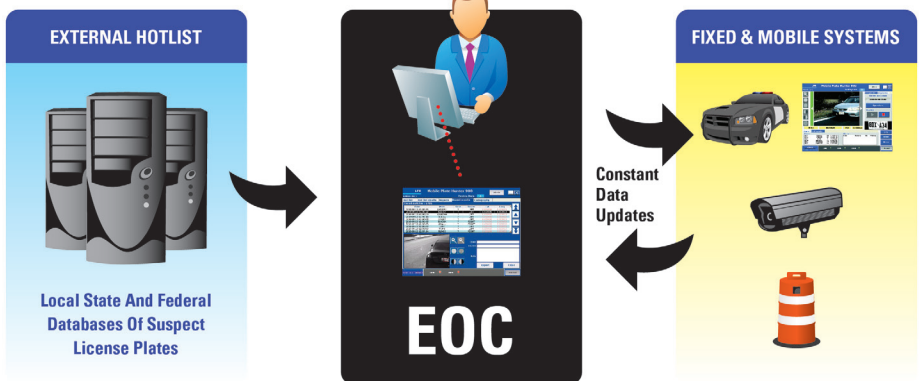


# THE ELSAG OPERATIONS CENTER™ COLLECTS, ANALYZES, AND MANAGES ALL YOUR ALPR DATA



Your agency's ALPR units collect vast amounts of data that help resolve issues in real time, as well as provide critical intelligence to aid investigations. The ELSAG Operations Center™ is the brain that manages all of these intelligence assets.

It runs automatically without user intervention.



## Features of the ELSAG Operations Center™

- Communicates with all cars, cameras, and tactical operations desks in your domain.
- Collects, analyzes, and manages data automatically, dramatically reducing clerical tasks.
- Performs intelligence analysis for ALPR based activities in your domain.
- Monitors the "state of health" of all units ensuring that each is current with up-to-date information.
- Allows you to close more cases faster with at-your-fingertips data and intelligence.
- Prevents loss or corruption of data.

# ELSAG™

OPERATIONS CENTER

ELSAG North America, LLC, a Finmeccanica company | *Global Leaders In Public Safety Technology*

1 (877) 77.ELSAG | 1 (877) 773.5724 | [info@elsag.com](mailto:info@elsag.com) | [www.elsag.com](http://www.elsag.com)

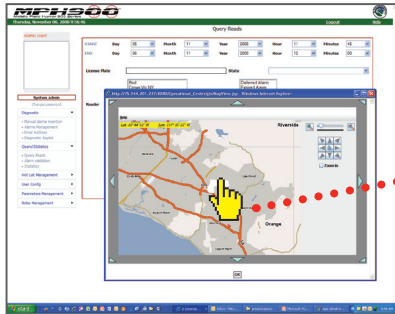
**YOUR MISSION...IS OUR MISSION.**

 Made In The USA

US 09/15/11

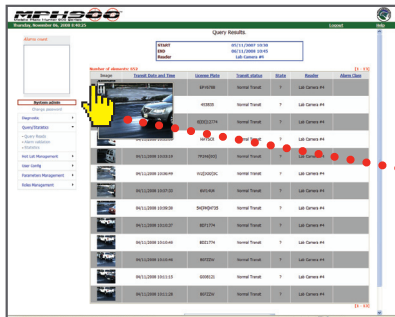


The ELSAG Operations Center's intuitive interface requires little training. Easy to use screens provide a simple way to perform analysis.



Point-and-click makes searching easy.

Simply place the cursor over the area that you want to search and click.



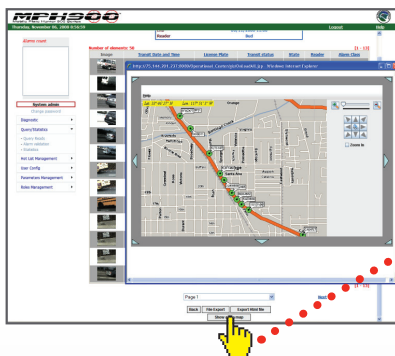
Thumbnail photos allow quick determination of vehicle of interest.

Positioning the mouse over the thumbnail picture instantly creates a larger picture.



Integrated mapping shows vehicle position.

Clicking on the map icon displays the location of the read on a map.



Instantly map all of the plates that you searched for.

Clicking on "Show all on map" displays all of your searches on a map—to help you determine if these vehicles were in the area under investigation.